



# THE VICTORIAN

## TWO STOREY

### NOTES

---

---

---

---

---

---

---

---

---

---

---

---

---

---

---

---

---

---

---

---

---

---

---

---

YOUR LOT, YOUR DREAM, CUSTOM BUILT.



**Beaverton Design Centre**  
B32015, Hwy # 12, RR # 3  
Beaverton, Ontario L0K 1A0  
Tel: 800-392-5493 | Fax: 705-426-9644  
Local: 705-426-5113  
E: beaverton@royalhomes.com

**Innisfil Design Centre**  
2014 Commerce Park Drive  
Innisfil, Ontario L9S 4A3  
Tel: 888-739-5122 | Fax: 705-436-5522  
Local: 705-436-1001  
E: innisfil@royalhomes.com

**Peterborough Design Centre**  
955 Hwy 7 East, RR 7  
Peterborough, Ontario K0L 2G0  
Tel: 800-659-0980 | Fax: 705-748-5849  
Local: 705-748-3283  
E: peterborough@royalhomes.com

**Gravenhurst Design Centre**  
2298 Highway 11N  
Gravenhurst, Ontario P1P 1R1  
Tel: 866-782-0033 | Fax: 705-687-0813  
Local: 705-687-3546  
E: gravenhurst@royalhomes.com




**Minden Design Centre**  
RR #1, Hwy #35 South, Box 395  
Minden, Ontario K0M 2K0  
Tel: 888-717-4923 | Fax: 705-286-1394  
Local: 705-286-6992  
E: minden@royalhomes.com

**Wingham Design Centre**  
40498 Amberley Road  
Wingham, Ontario N0G 2W0  
Tel: 800-265-3040 | Fax: 519-357-2508  
Local: 519-357-2444  
E: wingham@royalhomes.com

 213 Arthur Street, P.O. Box 370 | Wingham, Ontario, Canada N0G 2W0  
Tel: (519) 357.2606 | Toll Free: 1.800.265.3083 | E-mail: Royal@RoyalHomes.com  
**RoyalHomes.com**

\*Actual usable floor space may vary from stated floor area. Copyright by Royal Homes. All designs, floor plans and elevations contained herein are the exclusive property of Royal Homes. No home may be constructed in accordance with these plans, except as authorized in writing by the copyright owner. Plans are artist renderings only. For exact dimensions and specifications, please see blueprints.

### OVERVIEW

-  **2216 SQ. FT.\***
-  **4 BEDROOMS**
-  **2.5 BATHS**

The Victorian, graced with an elegant veranda, is a lovely two storey and the perfect choice - whether you want a country retreat or an urban showplace. The formal living room and dining room are set apart from the rest of the home, giving you plenty of room to entertain. The family room is a great place to relax and just hang out with family and friends, but watch out, you will definitely gravitate to the family kitchen. Four roomy bedrooms on the second storey let you retreat and relax, away from the traffic of the living area. There are many options from which you can choose to customize this home for your family.

**RoyalHomes.com**  
**1.800.265.3083**

# THE VICTORIAN HIGHLIGHTS

- Spacious Veranda
- Four Bedrooms
- Roomy Living & Dining Areas

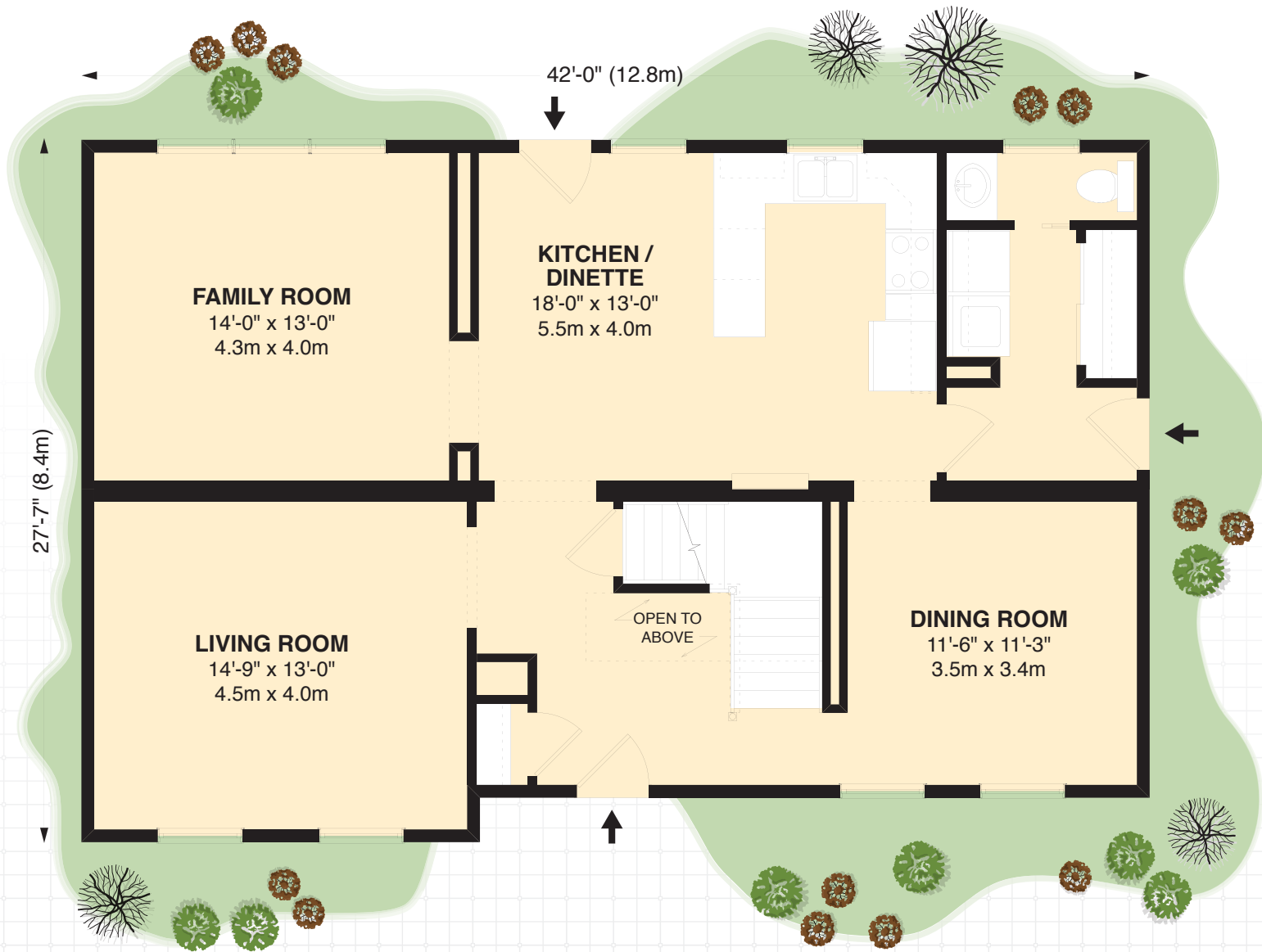
# 2216

SQ. FT.\*

▶ At Royal Homes, we are committed to creating the home that works for you and your family. With the thousands of custom options available for personalizing every inch of living space, your dream home can be a reality with Royal Homes!

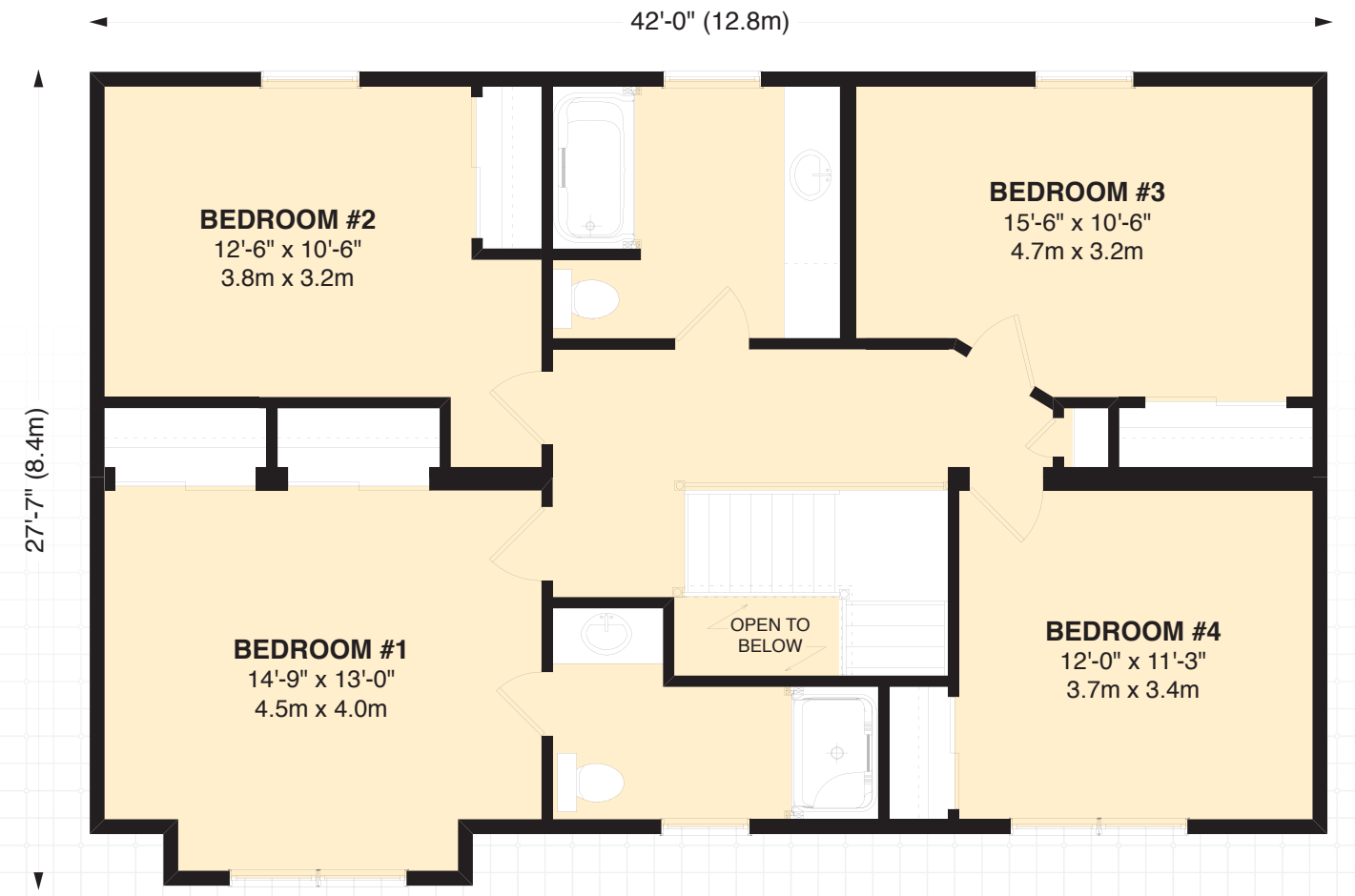
## CUSTOMIZATION & OPTIONS:

- Increase the width of the front porch
- Cement front porch
- Add fruit cellar in basement



**MAIN FLOOR**

↑ ENTRANCE



**UPPER FLOOR**