

Did you know?

Royal Homes supports the United Nations Sustainable Development Goals. Specifically goal 12.5 which is to substantially reduce waste generation through prevention, reduction, recycling and reuse. The Royal Homes factory reduces waste by reusing scrap and has had a recycling program for many years. We feel that prefabricating our homes in a factory allows us to better control how scrap materials are handled. This control enables us to efficiently minimize the amount of waste that goes to landfill.



VACATION
HOMES &
COTTAGES

Built Strong, **Smart & Green.**
Find a design centre near you.

Innisfil Design Centre

2014 Commerce Park Drive
Innisfil, Ontario L9S 4A3
Tel: 888-739-5122 | Fax: 705-436-5522
Local: 705-436-1001
E: innisfil@royalhomes.com

Gravenhurst Design Centre

2298 Highway 11N
Gravenhurst, Ontario P1P 1R1
Tel: 866-782-0033 | Fax: 705-687-0813
Local: 705-687-3546
E: gravenhurst@royalhomes.com

Peterborough Design Centre

955 Hwy 7 East, RR 7
Peterborough, Ontario K0L 2G0
Tel: 800-659-0980 | Fax: 705-748-5849
Local: 705-748-3283
E: peterborough@royalhomes.com

Minden Design Centre

RR #1, Hwy #35 South, Box 395
Minden, Ontario K0M 2K0
Tel: 888-717-4923 | Fax: 705-286-1394
Local: 705-286-6992
E: minden@royalhomes.com

Wingham Design Centre

40498 Amberley Road
Wingham, Ontario N0G 2W0
Tel: 800-265-3040 | Fax: 519-357-2508
Local: 519-357-2444
E: wingham@royalhomes.com

Alpine 'B'

↔ 1324 sq.ft.

🛏 3 bed

🚿 2 bath



213 Arthur Street, P.O. Box 370 | Wingham, Ontario, Canada N0G 2W0
Tel: (519) 357.2606 | Toll Free: 1.800.265.3083 | E-mail: Royal@RoyalHomes.com
RoyalHomes.com

*Actual usable floor space may vary from stated floor area. Copyright by Royal Homes. All designs, floor plans and elevations contained herein are the exclusive property of Royal Homes. No home may be constructed in accordance with these plans, except as authorized in writing by the copyright owner. Plans are artist renderings only. For exact dimensions and specifications, please see blueprints.

06/2020

Your lot. Your dream.
Custom Built.

RoyalHomes.com | 1.800.265.3083





Two Storey

Scenic Views. Modern Living.

Make the most of this lovely cottage! The steeply sloped roof is a perfect place to tuck an open loft and extra bedroom. And look at the windows! Full patio doors open to the garden from the large living area. The galley kitchen is the perfect size to prepare meals and opens to the living area, making every meal a family event. Two full baths welcome friends and family alike. Just over 1300 square feet for your leisure and relaxation. Enjoy!

Dimensions & Rooms

-  **1324 Sq. Ft.***
-  **3 Bedrooms**
-  **2 Baths**

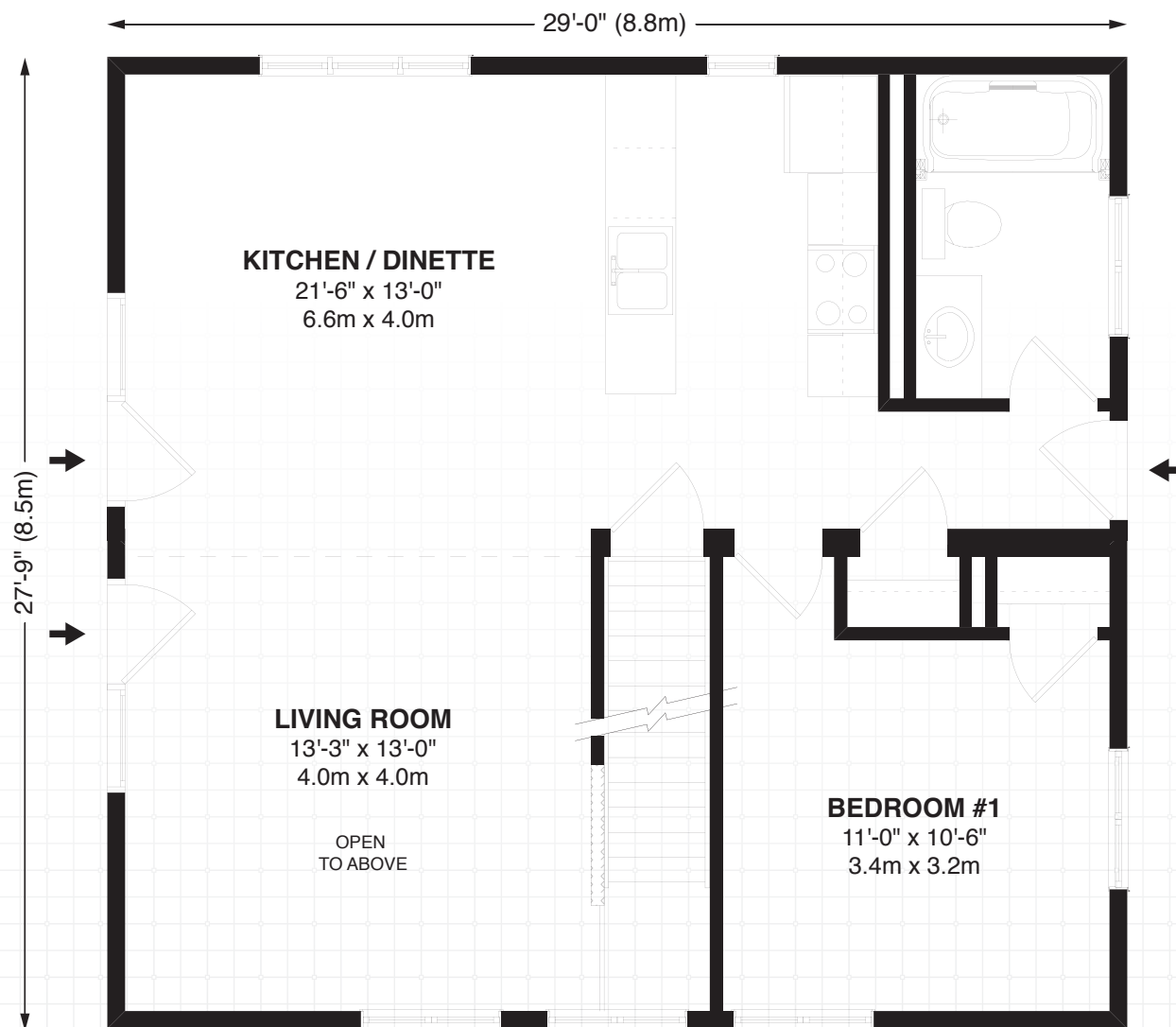
Alpine 'B' Highlights

- Large Living Space
- Two Full Baths
- Galley Kitchen

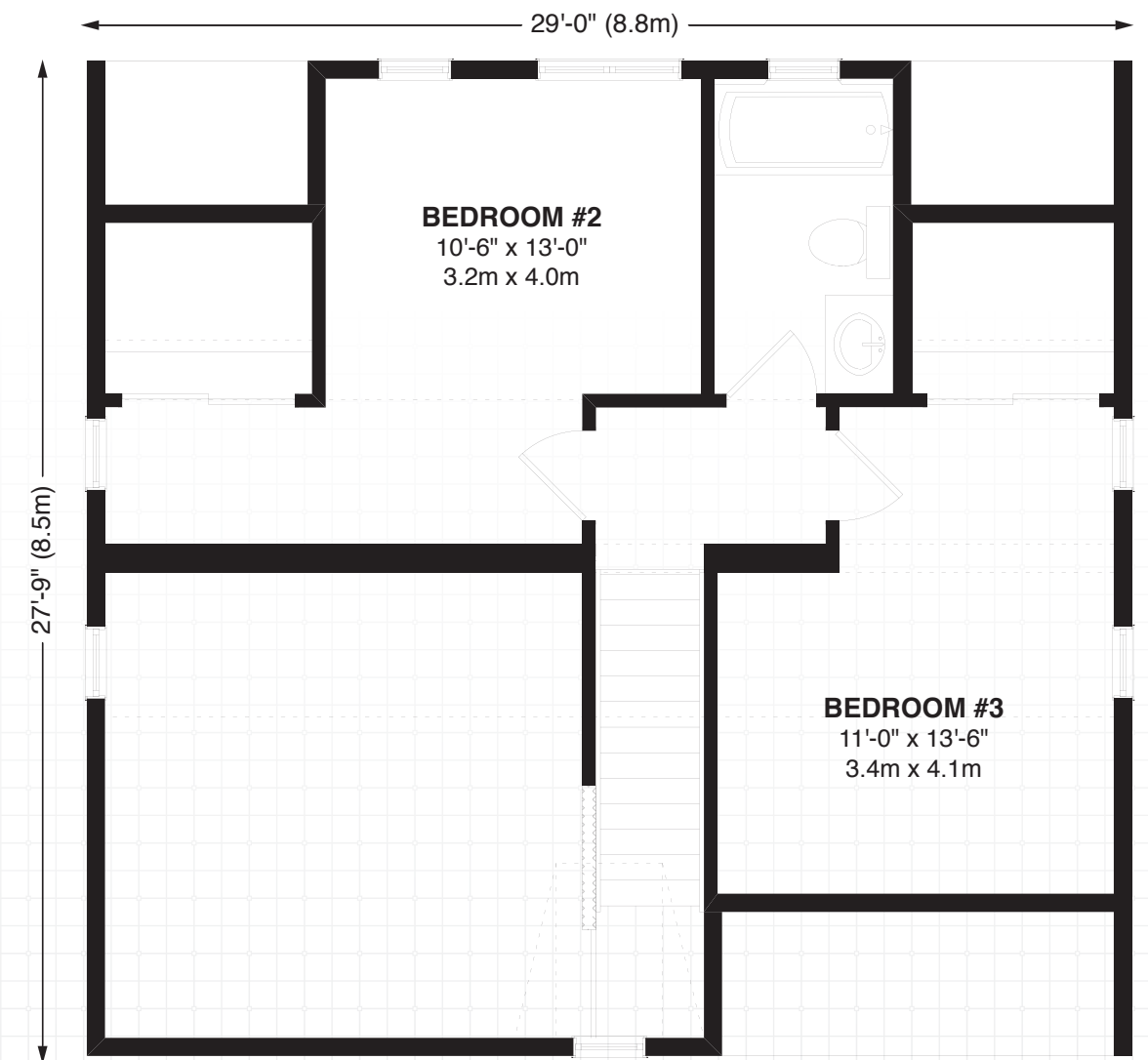
Customization & Options

- A standalone fireplace in between the living room and dinette
- A deck off the second floor loft area
- Railing on second floor to be oak and wrought iron spindles

Main Floor



Upper Floor



At Royal Homes, we are committed to creating the home that works for you and your family. With the thousands of custom options available for personalizing every inch of living space, your dream home can be a reality with Royal Homes!

