

## Did you know?

Royal Homes supports the United Nations Sustainable Development Goals. Specifically goal 12.5 which is to substantially reduce waste generation through prevention, reduction, recycling and reuse. The Royal Homes factory reduces waste by reusing scrap and has had a recycling program for many years. We feel that prefabricating our homes in a factory allows us to better control how scrap materials are handled. This control enables us to efficiently minimize the amount of waste that goes to landfill.



TWO STOREY HOMES

Built Strong, **Smart & Green.**  
Find a design centre near you.

### Innisfil Design Centre

2014 Commerce Park Drive  
Innisfil, Ontario L9S 4A3  
Tel: 888-739-5122 | Fax: 705-436-5522  
Local: 705-436-1001  
E: innisfil@royalhomes.com

### Gravenhurst Design Centre

2298 Highway 11N  
Gravenhurst, Ontario P1P 1R1  
Tel: 866-782-0033 | Fax: 705-687-0813  
Local: 705-687-3546  
E: gravenhurst@royalhomes.com

### Peterborough Design Centre

955 Hwy 7 East, RR 7  
Peterborough, Ontario K0L 2G0  
Tel: 800-659-0980 | Fax: 705-748-5849  
Local: 705-748-3283  
E: peterborough@royalhomes.com

### Minden Design Centre

RR #1, Hwy #35 South, Box 395  
Minden, Ontario K0M 2K0  
Tel: 888-717-4923 | Fax: 705-286-1394  
Local: 705-286-6992  
E: minden@royalhomes.com

### Wingham Design Centre

40498 Amberley Road  
Wingham, Ontario N0G 2W0  
Tel: 800-265-3040 | Fax: 519-357-2508  
Local: 519-357-2444  
E: wingham@royalhomes.com

### Sarnia Design Centre

286 London Road  
Sarnia, Ontario N7T 4W1  
Tel: 833-337-8686  
Local: 519-337-8686  
E: sarnia@royalhomes.com

# Ambercroft

↔ 1920 sq.ft.

🛏 2 bed

🚿 1 bath



213 Arthur Street, P.O. Box 370 | Wingham, Ontario, Canada N0G 2W0  
Tel: (519) 357.2606 | Toll Free: 1.800.265.3083 | E-mail: Royal@RoyalHomes.com  
[RoyalHomes.com](http://RoyalHomes.com)

\*Actual usable floor space may vary from stated floor area. Copyright by Royal Homes. All designs, floor plans and elevations contained herein are the exclusive property of Royal Homes. No home may be constructed in accordance with these plans, except as authorized in writing by the copyright owner. Plans are artist renderings only. For exact dimensions and specifications, please see blueprints.

03/2021

Your lot. Your dream.  
Custom Built.

RoyalHomes.com | 1.800.265.3083



# Scenic Views. Modern Living.

The charming peaked roof will be the first thing you see when you gaze up at the Ambercroft, but it would be hard not to also notice the gorgeous wraparound porch. The back of the porch has an entrance to the kitchen, perfect for those lazy summer days when you need a frosty refill of lemonade. Stepping into the main foyer, you'll be invited into the large open living/kitchen area. Each of the bedrooms in this home has a unique quality. The master bedroom is magnificent with a complete ensuite bathroom and large walk-in closet. The second bedroom at the front features large panel windows that fill the room with sunlight. When you need a little time to yourself, you'll appreciate the cozy privacy of the second floor loft.

## Dimensions & Rooms

-  1920 Sq. Ft.\*
-  2 Bedrooms
-  1 Bath

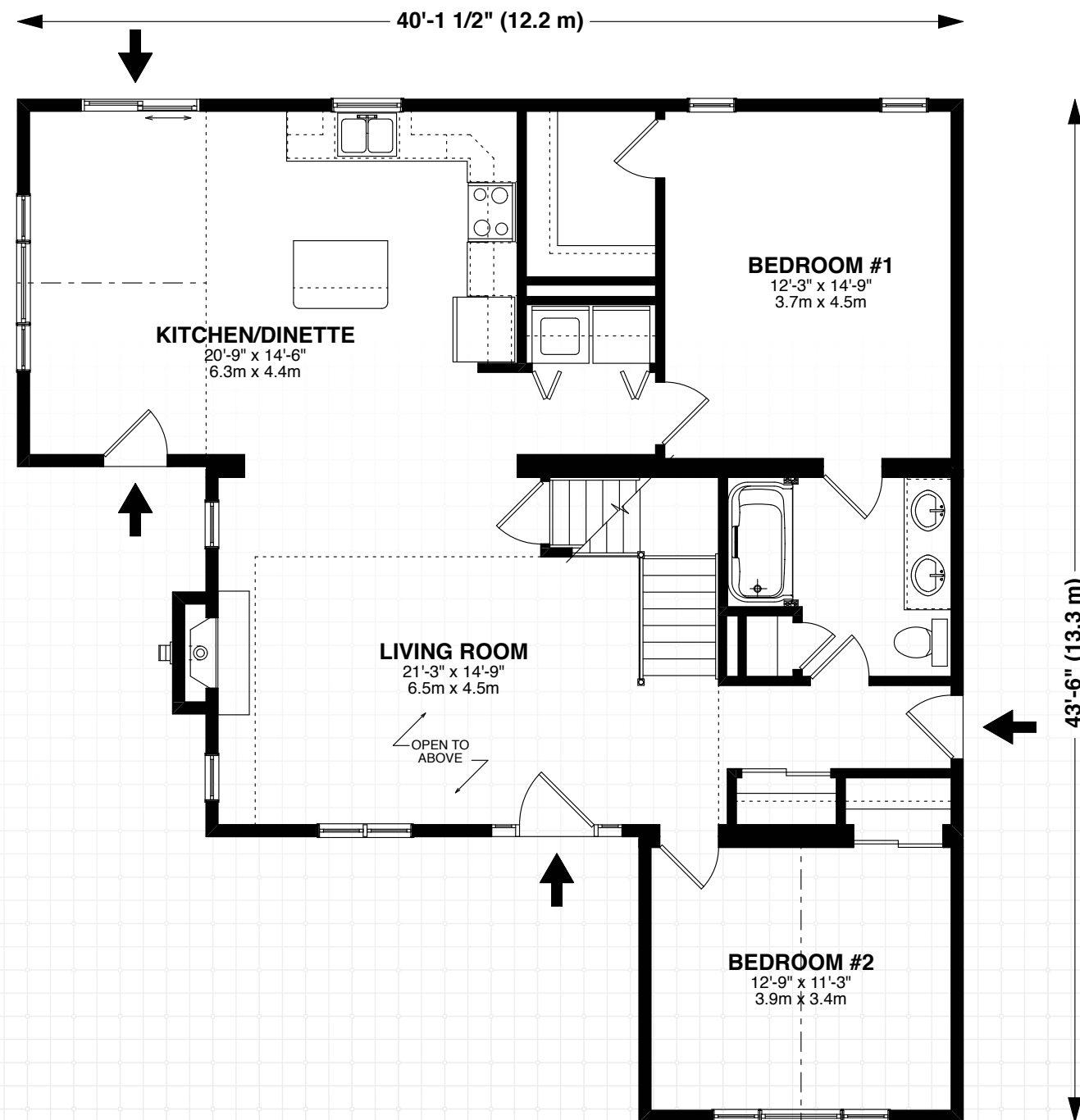
## Ambercroft Highlights

- Modern living area with Living Room, Kitchen and Dining area all open plan
- Open to below from a 2nd floor loft - for play/work areas still part of household living
- Garage entrance next to laundry area for changing out of play/work clothes
- Country wrap around porch brings outdoor living into the home

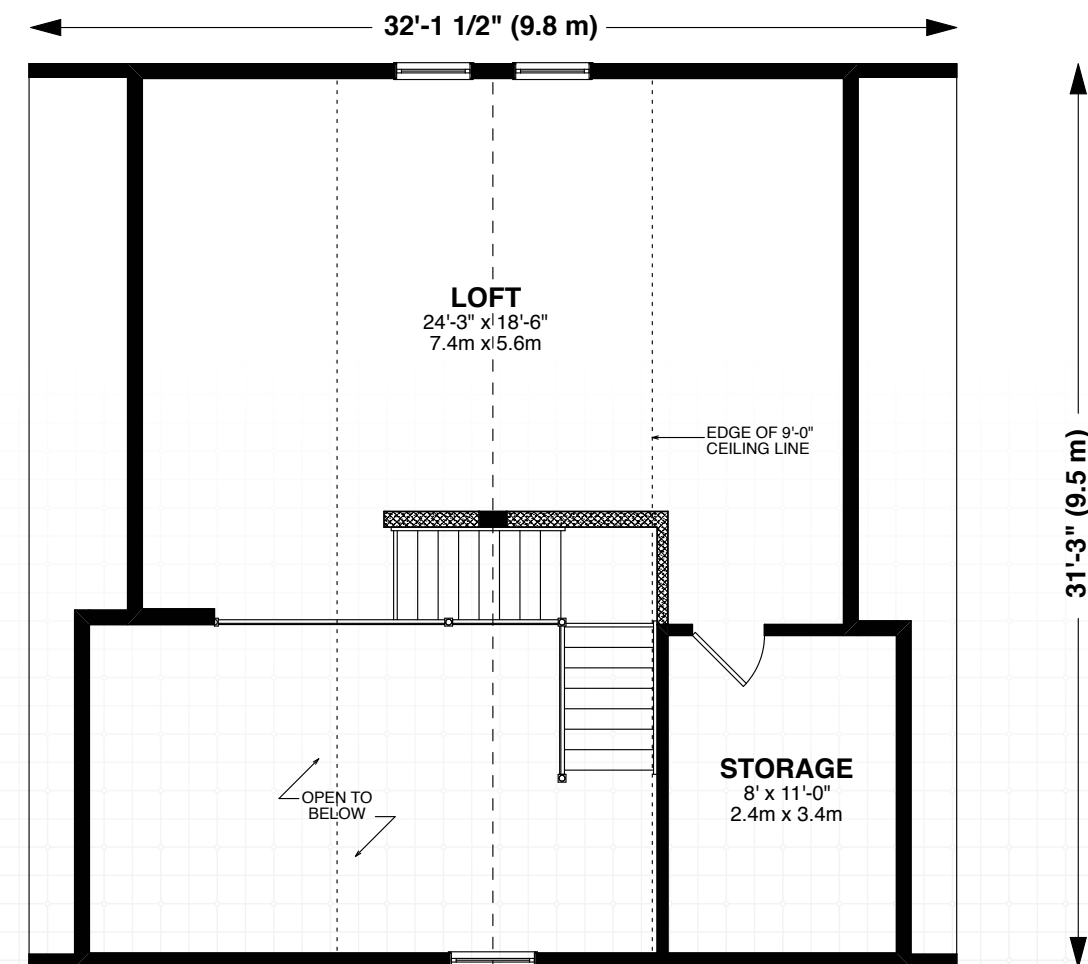
## Customization & Options

- Farmer's sink
- Upgrade your faucets in aged bronze
- Upgrade your cabinets with a beautiful pull, like a Transitional Handle

### Main Floor



### Upper Floor



At Royal Homes, we are committed to creating the home that works for you and your family. With the thousands of custom options available for personalizing every inch of living space, your dream home can be a reality with Royal Homes!

