

Did you know?

Royal Homes supports the United Nations Sustainable Development Goals. Specifically goal 12.5 which is to substantially reduce waste generation through prevention, reduction, recycling and reuse. The Royal Homes factory reduces waste by reusing scrap and has had a recycling program for many years. We feel that prefabricating our homes in a factory allows us to better control how scrap materials are handled. This control enables us to efficiently minimize the amount of waste that goes to landfill.



TWO-STOREY HOMES

Built Strong, **Smart & Green.**
Find a design centre near you.

Innisfil Design Centre
2014 Commerce Park Drive
Innisfil, Ontario L9S 4A3
Tel: 888-739-5122 | Fax: 705-436-5522
Local: 705-436-1001
E: innisfil@royalhomes.com

Gravenhurst Design Centre
2298 Highway 11N
Gravenhurst, Ontario P1P 1R1
Tel: 866-782-0033 | Fax: 705-687-0813
Local: 705-687-3546
E: gravenhurst@royalhomes.com

Peterborough Design Centre
955 Hwy 7 East, RR 7
Peterborough, Ontario K0L 2G0
Tel: 800-659-0980 | Fax: 705-748-5849
Local: 705-748-3283
E: peterborough@royalhomes.com

Minden Design Centre
RR #1, Hwy #35 South, Box 395
Minden, Ontario K0M 2K0
Tel: 888-717-4923 | Fax: 705-286-1394
Local: 705-286-6992
E: minden@royalhomes.com

Wingham Design Centre
40498 Amberley Road
Wingham, Ontario N0G 2W0
Tel: 800-265-3040 | Fax: 519-357-2508
Local: 519-357-2444
E: wingham@royalhomes.com

Citadel

2587 sq.ft.
3 bed
2.5 bath



213 Arthur Street, P.O. Box 370 | Wingham, Ontario, Canada N0G 2W0
Tel: (519) 357.2606 | Toll Free: 1.800.265.3083 | E-mail: Royal@RoyalHomes.com
RoyalHomes.com

*Actual usable floor space may vary from stated floor area. Copyright by Royal Homes. All designs, floor plans and elevations contained herein are the exclusive property of Royal Homes. No home may be constructed in accordance with these plans, except as authorized in writing by the copyright owner. Plans are artist renderings only. For exact dimensions and specifications, please see blueprints.

06/2020

Your lot. Your dream.
Custom Built.

RoyalHomes.com | 1.800.265.3083



Two Storey

Scenic Views. Modern Living.

The grand columns and oversized front porch welcome you into your new home. A large foyer entices you to move further into the great room where a fireplace warms the room. Your family can gather and share the stories of their day in the large eat in kitchen. The master suite lies off the great room with a large ensuite including double sinks and a relaxing soaker tub. Upstairs are two additional bedrooms and a four piece bathroom. To complete the thoughtful amenities of this home, a home theatre, and kitchenette are included in the basement, along with a wine cellar, and large room opened to the back yard. Everything is included in this design, just move in!

Dimensions & Rooms

-  2587 Sq. Ft.*
-  3 Bedrooms
-  2.5 Baths

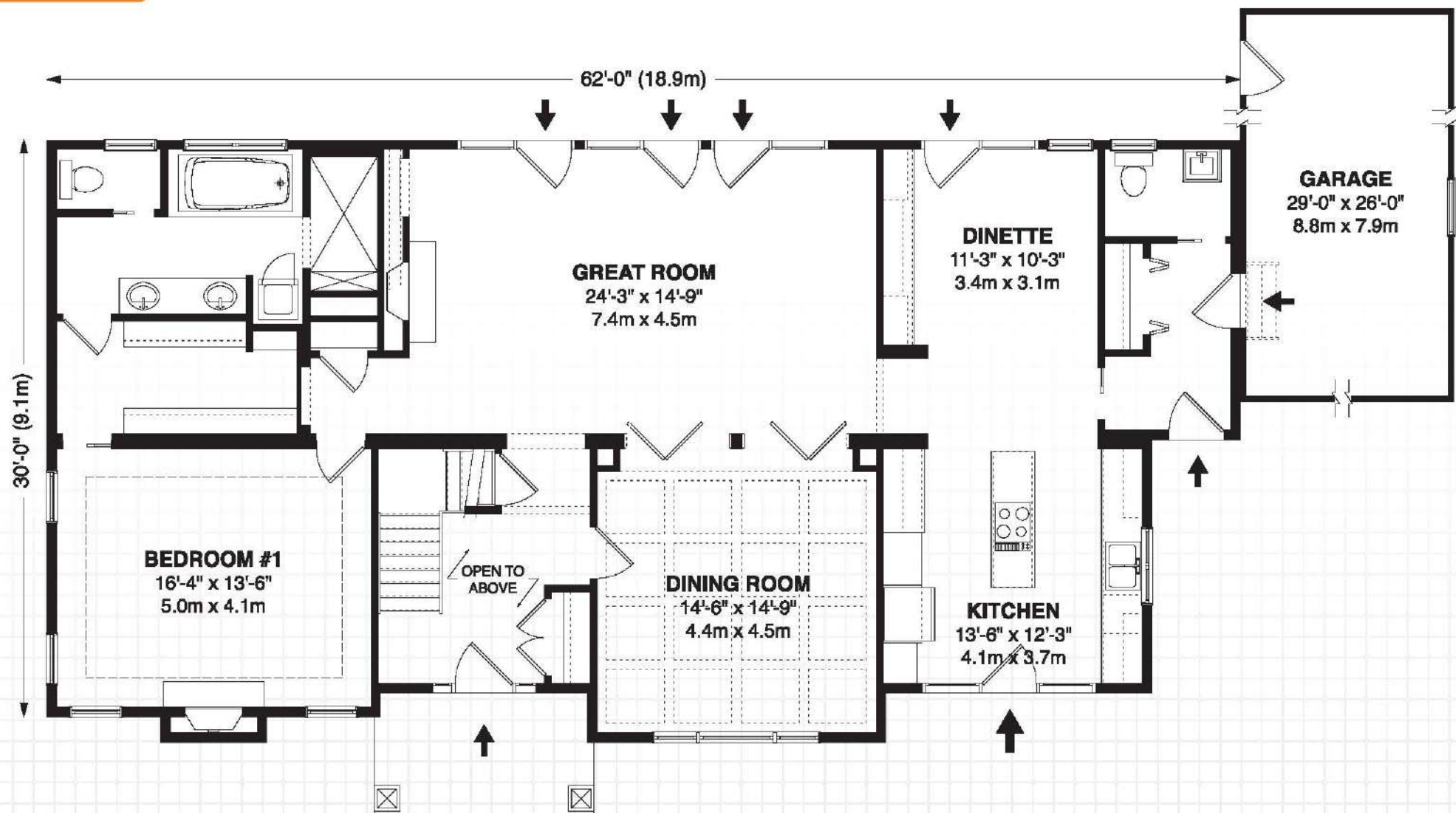
Citadel Highlights

- Solid stone exterior with sweeping front porch
- High ceiling & robust fireplace
- Private ensuite bathroom with double sinks

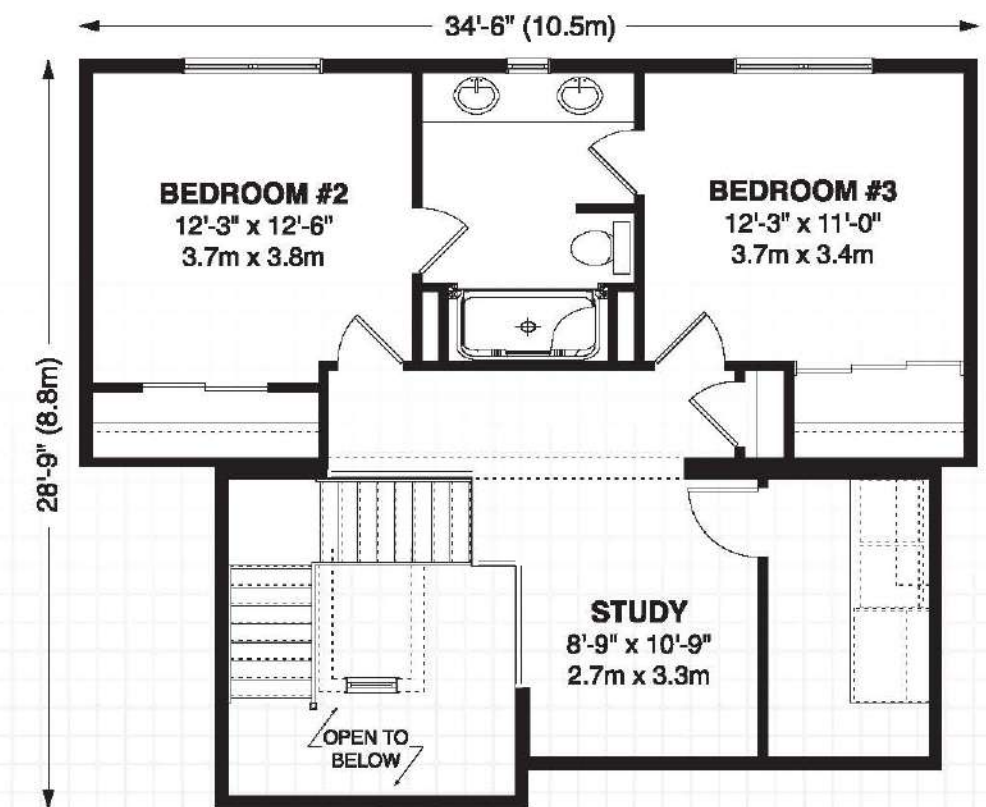
Customization & Options

- Oak stair case, with carpet runner and oak railing and posts and wrought iron spindles
- Ceramic tile flooring in kitchen, dinette

Main Floor



Upper Floor



At Royal Homes, we are committed to creating the home that works for you and your family. With the thousands of custom options available for personalizing every inch of living space, your dream home can be a reality with Royal Homes!

