



## This image shows a blank sheet of white paper with horizontal ruling lines. The lines are evenly spaced and run across the width of the page. There are no margins, text, or other markings on the paper.

\*Actual usable floor space may vary from stated floor area. Copyright by Royal Homes. All designs, floor plans and elevations contained herein are the exclusive property of Royal Homes. No home may be constructed in accordance with these plans, except as authorized in writing by the copyright owner. Plans are artist renderings only. For exact dimensions and specifications, please see blueprints.

**RoyalHomes.com**  
**1.800.265.3083**



# THE CARLING HIGHLIGHTS

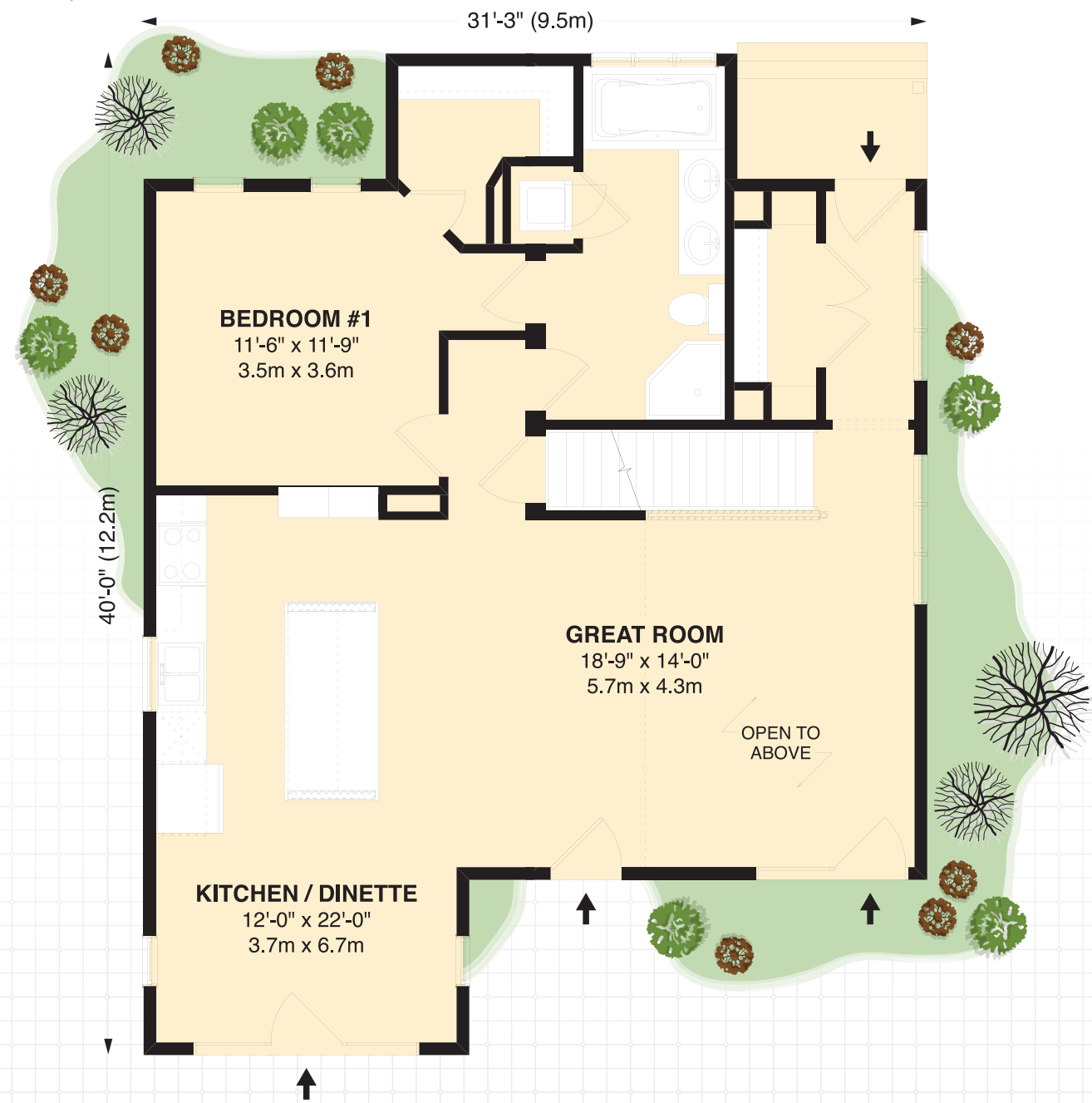
- Spacious Kitchen & Extended Bar
- Cathedral Ceiling Dinette
- Three Bedrooms

1617 SQ. FT.\*

► At Royal Homes, we are committed to creating the home that works for you and your family. With the thousands of custom options available for personalizing every inch of living space, your dream home can be a reality with Royal Homes!

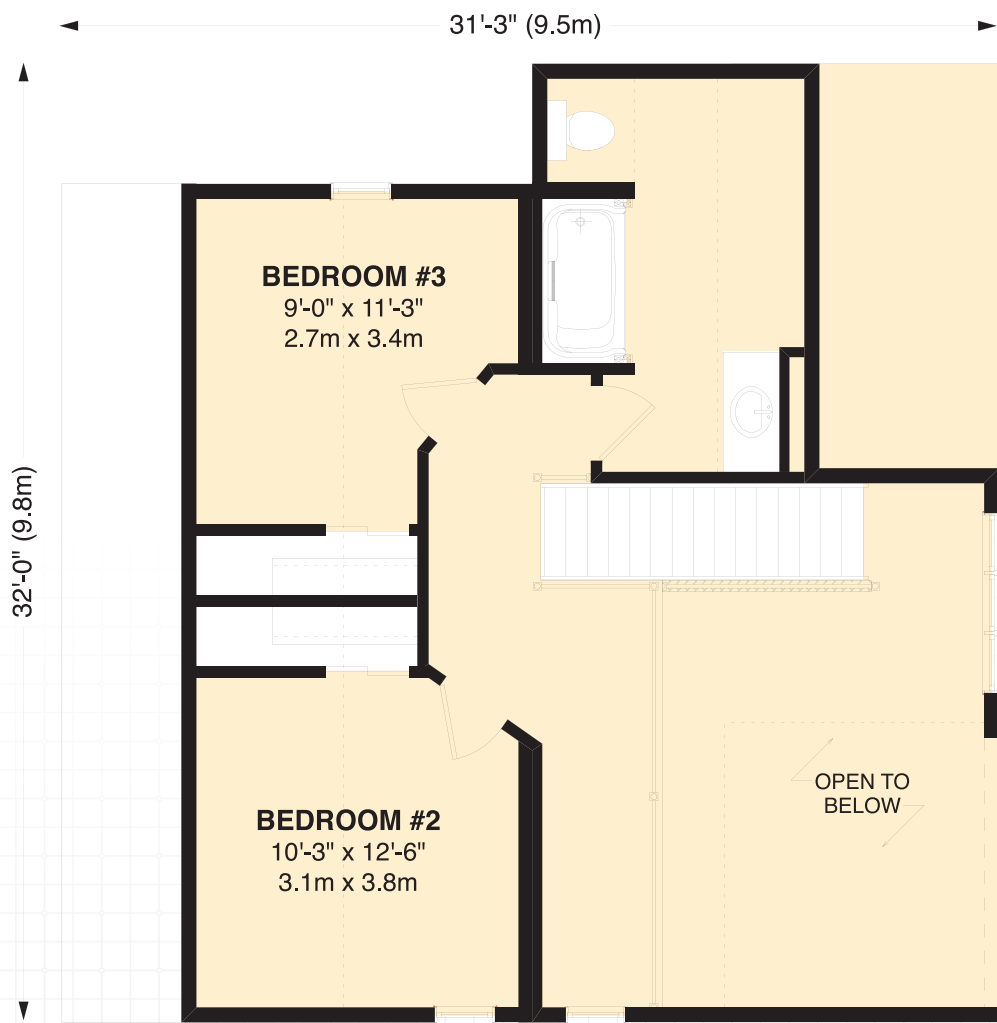
## CUSTOMIZATION & OPTIONS:

- This kitchen has the perfect layout for a sit up island, make it the center of attention, and finish it in a dark stained oak, while the rest of the cabinets are painted out cloud white
- Add a glass tile backsplash
- And pendent lighting over the island



MAIN FLOOR

↑ ENTRANCE    // REDUCED FROM ACTUAL SIZE



UPPER FLOOR