

Did you know?

Royal Homes supports the United Nations Sustainable Development Goals. Specifically goal 12.5 which is to substantially reduce waste generation through prevention, reduction, recycling and reuse. The Royal Homes factory reduces waste by reusing scrap and has had a recycling program for many years. We feel that prefabricating our homes in a factory allows us to better control how scrap materials are handled. This control enables us to efficiently minimize the amount of waste that goes to landfill.



ROYAL-Q
HOMES

Built Strong, **Smart & Green.**
Find a design centre near you.

Innisfil Design Centre

2014 Commerce Park Drive
Innisfil, Ontario L9S 4A3
Tel: 888-739-5122 | Fax: 705-436-5522
Local: 705-436-1001
E: innisfil@royalhomes.com

Gravenhurst Design Centre

2298 Highway 11N
Gravenhurst, Ontario P1P 1R1
Tel: 866-782-0033 | Fax: 705-687-0813
Local: 705-687-3546
E: gravenhurst@royalhomes.com

Peterborough Design Centre

955 Hwy 7 East, RR 7
Peterborough, Ontario K0L 2G0
Tel: 800-659-0980 | Fax: 705-748-5849
Local: 705-748-3283
E: peterborough@royalhomes.com

Minden Design Centre

RR #1, Hwy #35 South, Box 395
Minden, Ontario K0M 2K0
Tel: 888-717-4923 | Fax: 705-286-1394
Local: 705-286-6992
E: minden@royalhomes.com

Wingham Design Centre

40498 Amberley Road
Wingham, Ontario N0G 2W0
Tel: 800-265-3040 | Fax: 519-357-2508
Local: 519-357-2444
E: wingham@royalhomes.com

Royal Q15A

1443 sq.ft.
2 bed
2 bath



213 Arthur Street, P.O. Box 370 | Wingham, Ontario, Canada N0G 2W0
Tel: (519) 357.2606 | Toll Free: 1.800.265.3083 | E-mail: Royal@RoyalHomes.com
RoyalHomes.com

*Actual usable floor space may vary from stated floor area. Copyright by Royal Homes. All designs, floor plans and elevations contained herein are the exclusive property of Royal Homes. No home may be constructed in accordance with these plans, except as authorized in writing by the copyright owner. Plans are artist renderings only. For exact dimensions and specifications, please see blueprints.

06/2020

Your lot. Your dream.
Custom Built.




RoyalHomes.com | 1.800.265.3083



Scenic Views. Modern Living.

The Royal Q15A is a home of modern design to meet the needs of both the modern and traditional home owner. With spacious exterior, the interior becomes larger then meets the eye to fit any size family comfortably. Given it's adaptability for design customization, this home can be lived in by families, cottagers, retirees and more. The Royal Q15A's affordability, flexible size, clean modern design, ease of access make it an ideal choice for prospective homeowners.

Dimensions & Rooms

-  1443 Sq. Ft.*
-  2 Bedrooms
-  2 Baths

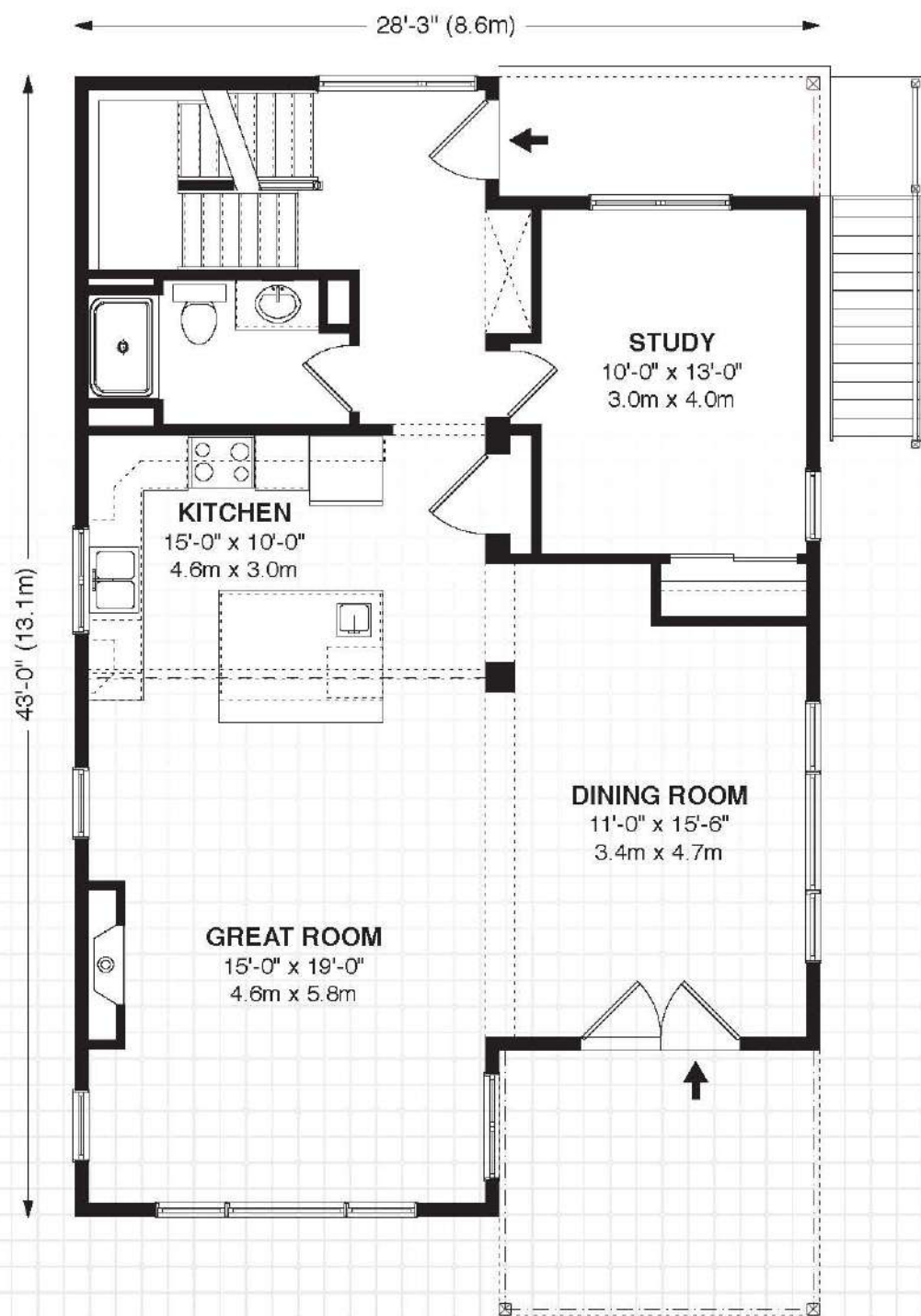
Royal Q15A Highlights

- Cathedral Ceiling in Great Room
- Clerestorey Windows Looking into Great Room
- Ensuite Tiled Shower with Glass Doors
- Exposed Rafters in Covered Porch Areas

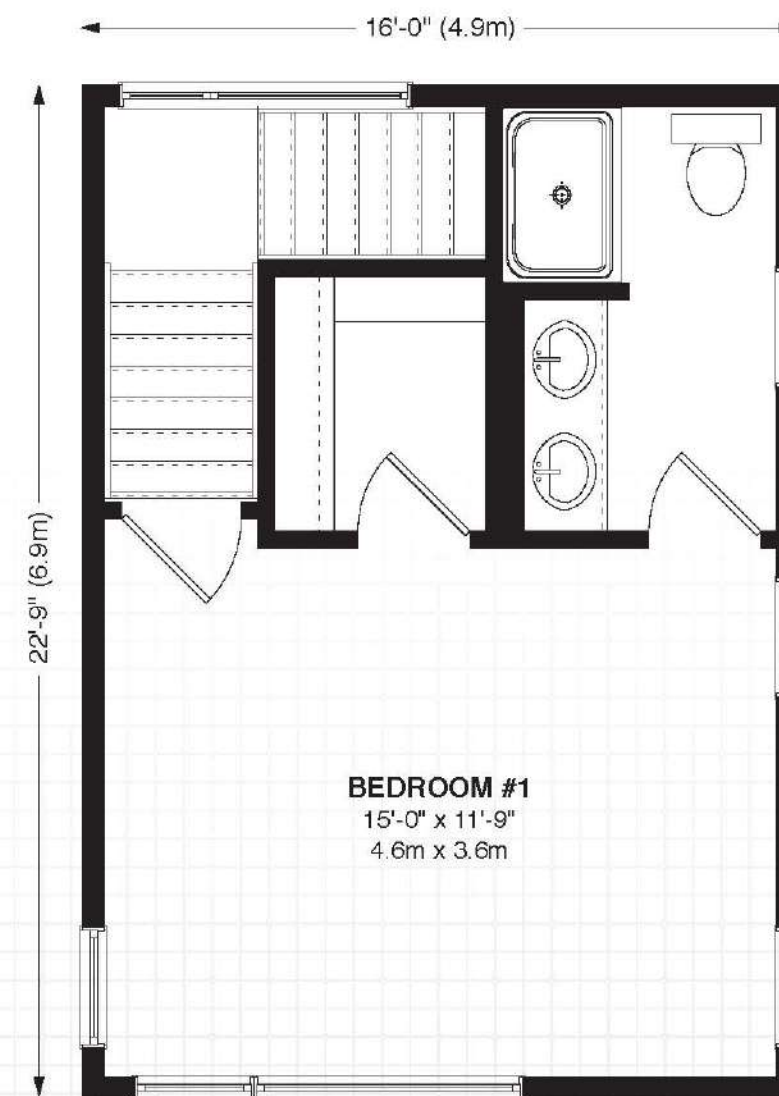
Customization & Options

- Spacious entry with room for built-in bench
- Additional family room in basement with access to beach from family room and bedroom

Main Floor



Upper Floor



At Royal Homes, we are committed to creating the home that works for you and your family. With the thousands of custom options available for personalizing every inch of living space, **your dream home can be a reality with Royal Homes!**

