



THE MILFORD

VACATION HOMES & COTTAGES

YOUR LOT, YOUR DREAM, CUSTOM BUILT.



OVERVIEW



1616 SQ. FT.*



3 BEDROOMS



2.5 BATHS

The Milford is lovely - the veranda and peaked roof adds interest to the exterior of the home, while maintaining its simple elegance. The master suite is a spectacular retreat centre. A full walk-through closet with a complete four-piece bath makes this much more than a bedroom - it is your own private space. The well-designed and space conscious kitchen is perfect for family meals and entertaining special guests. The main entrance is just off of the living room and the veranda is right off of the dining room, extending your family space into the beauty of your yard. This is a very attractive home!

CUSTOMIZATION & OPTIONS:

- Add a screened in porch
- Cozy up the living room by adding a fireplace
- Open up the kitchen, remove walls and flip rooms to make it more open concept

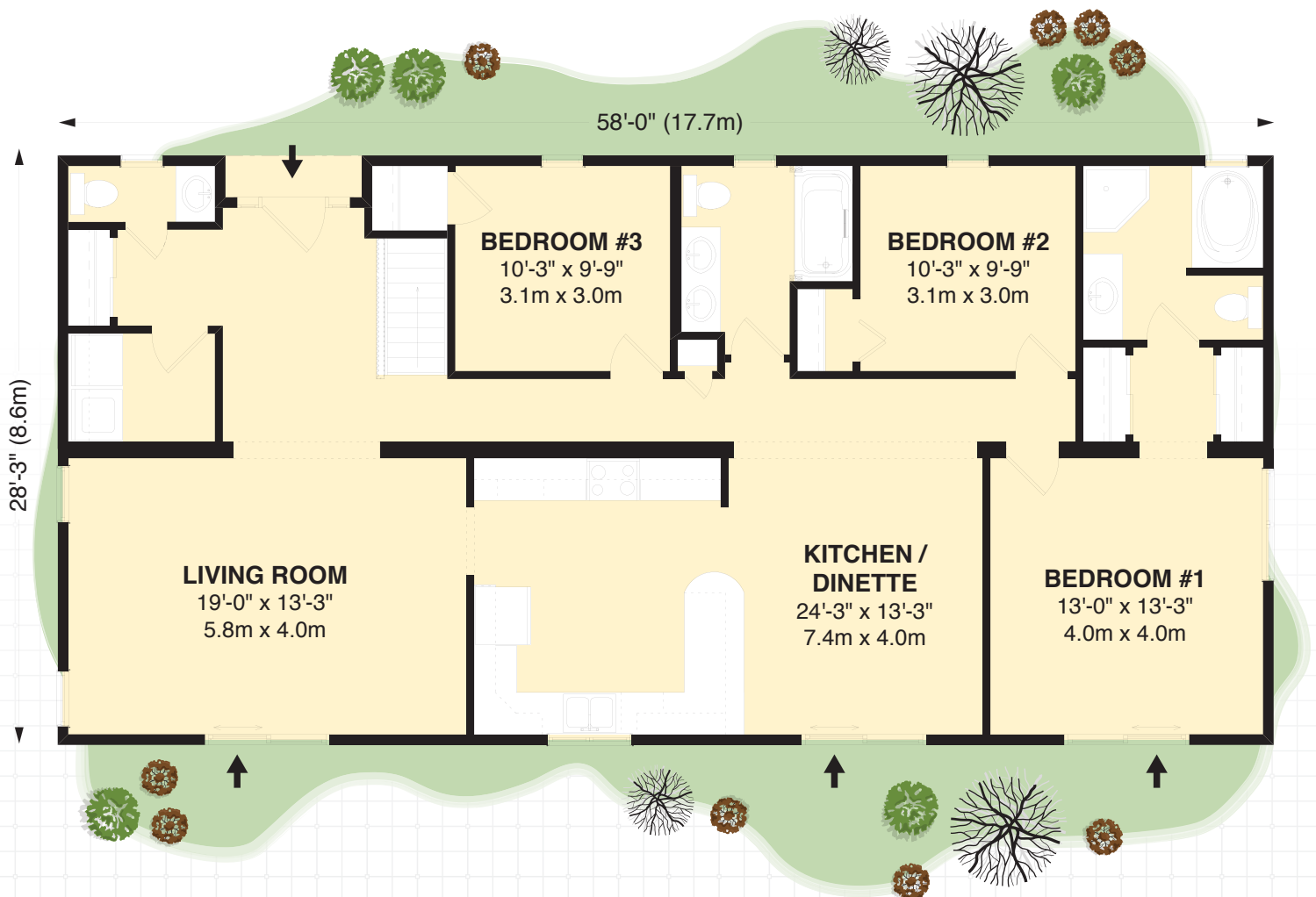
RoyalHomes.com
1.800.265.3083

THE MILFORD HIGHLIGHTS

- Spacious Veranda
- Peaked Roof
- Walk-through Closet

1616

SQ. FT.*



MAIN FLOOR

↑ **ENTRANCE**



213 Arthur Street, P.O. Box 370 | Wingham, Ontario, Canada N0G 2W0
Tel: (519) 357.2606 | Toll Free: 1.800.265.3083 | E-mail: Royal@RoyalHomes.com
RoyalHomes.com

*Actual usable floor space may vary from stated floor area. Copyright by Royal Homes. All designs, floor plans and elevations contained herein are the exclusive property of Royal Homes. No home may be constructed in accordance with these plans, except as authorized in writing by the copyright owner. Plans are artist renderings only. For exact dimensions and specifications, please see blueprints.