



FIRST NATIONS
HOMES



Pine Tree

↔ 932 sq.ft.

🛏 1 bed

🚿 1 bath



**Your lot. Your dream.
Custom Built.**

213 Arthur Street, P.O. Box 370 | Wingham, Ontario, Canada N0G 2W0
First Nations Housing Tel: (705) 930.6044 | Toll Free: 1.800.265.3083
E-mail: firstnationshousing@RoyalHomes.com | RoyalHomes.com



Scenic Views. Modern Living.

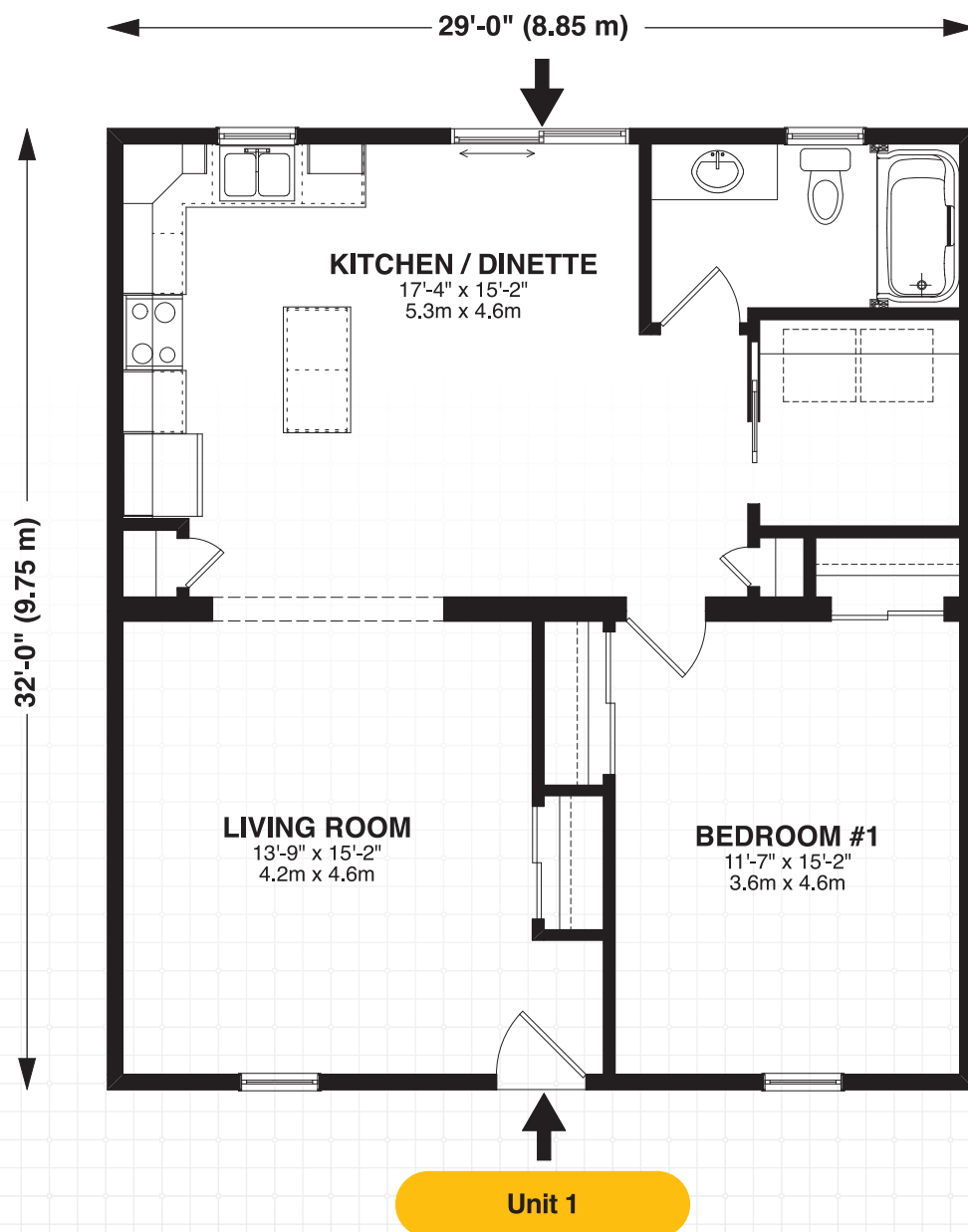
Pine Tree



The Pine Tree is a modern compact design that suits the current trend of downsizing and simplifying one's living space. This functional design fits the criteria for a lot of young residents looking to become first-time homeowners as well as those looking to settle down and relax in the later stages of life.

Pine Tree Highlights

- Compact design
- Kitchen island for more counter space
- Front and rear entrances



*Actual usable floor space may vary from stated floor area. Copyright by Royal Homes. All designs, floor plans and elevations contained herein are the exclusive property of Royal Homes. No home may be constructed in accordance with these plans, except as authorized in writing by the copyright owner. Plans are artist renderings only. For exact dimensions and specifications, please see blueprints.

07/2022