






Mapleridge 500  2955 SQ. FT  5 BED  3.5 BATH

TWO STOREY  
HOMES




FROM DREAM TO DWELLING  
CUSTOM BUILT FOR YOU

Mobile: 519-357-2606  
Toll Free: 1-800-265-3083  
E-mail: [info@royalhomes.com](mailto:info@royalhomes.com)

Royal Homes Corporation  
213 Arthur Street, P.O. Box 370  
Wingham, ON N0G 2W0



Mapleridge 500

 2955 SQ. FT  5 BED  3.5 BATH

TWO STOREY

Highlights

- Five-bedroom family design
- Main-floor guest or in-law suite
- Open kitchen and family room layout
- Primary retreat with dual walk-ins and seating area
- Perfect for large or multi-generational households

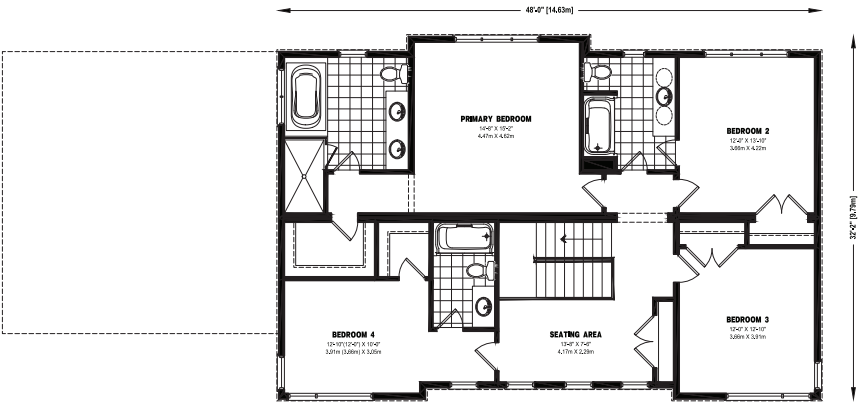
Customization & Options

- Smart Home Package
- Under Cabinet Lighting
- Cathedral Ceilings
- Deck off the Kitchen & Breakfast Areas

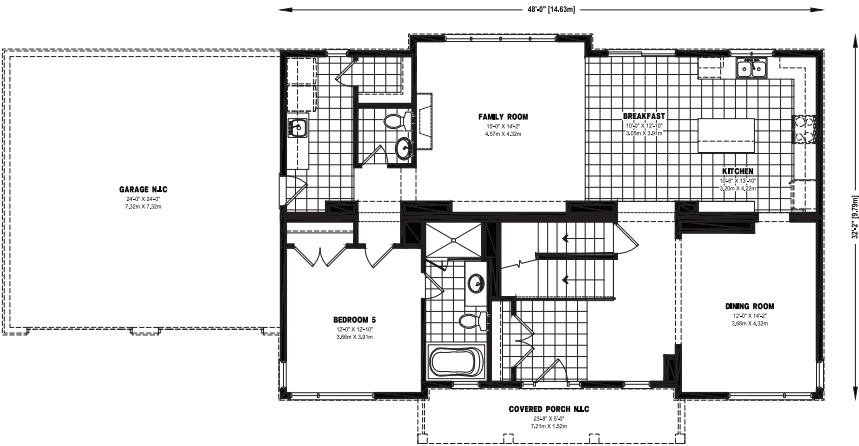
SCENIC VIEWS. MODERN LIVING.

The Mapleridge 500 brings generous living to life with five bedrooms and a layout that suits large or multi-generational families. A bright, open main floor connects the kitchen, dining, and family spaces, while upstairs, a luxurious primary suite with seating area and dual walk-in closets creates a private haven.

UPPER FLOOR



MAIN FLOOR



\*Actual usable floor space may vary from stated floor area. Copyright by Royal Homes. All design, floorplans and elevations contained herein are the exclusive property of Royal Homes. No home may be constructed in accordance with these plans, except as authorized in writing by the copyright owner. Plans are artist renderings only. For exact dimensions and specifications, please see blueprints.